

1896

# MAISON FICHET

— C U I R —

## AGNEAU NAPPA

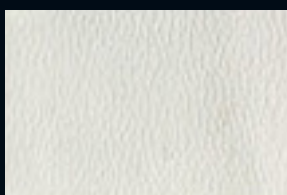
Support: Agneau

Aspect: Toucher aniline

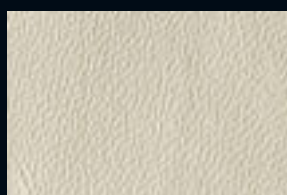
Épaisseur: 0.5/0.7mm

Tannage: Minéral

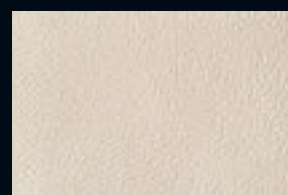
Taille: Peau entière



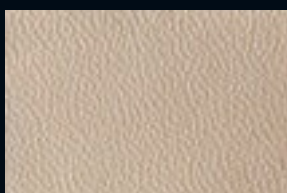
BLANCO NUCLEAR



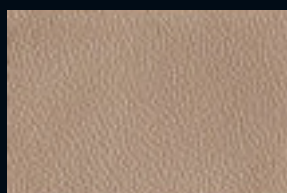
SILVER GREEN



EGNOGG



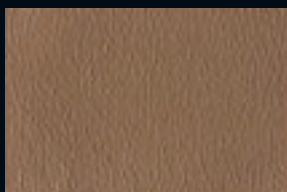
HUESO



PIEDRA



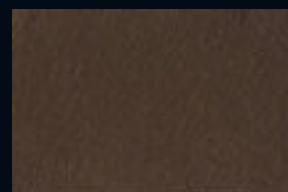
ALMONDINE



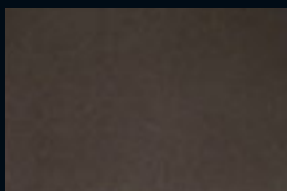
TAUPE



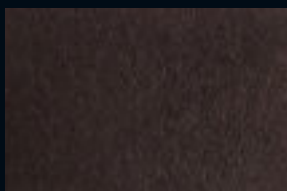
CASTOR



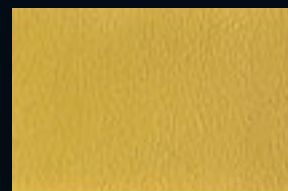
MUSGO



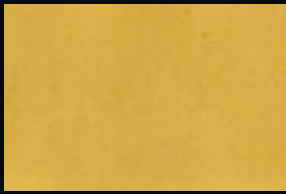
DARK GREY



BLACK COFFEE



CHAMOIS



SUNLIGHT



SULPHUR



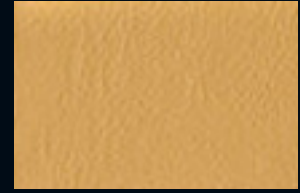
GOLDEN ROD



SPRUCE YELLOW



TAWNY OLIVE



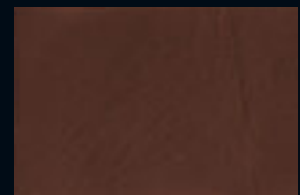
SHEEP SKIN



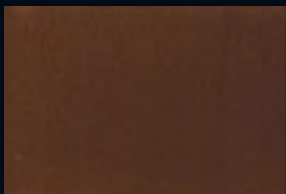
INCA GOLD



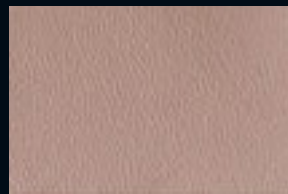
LEATHER BROWN



MARTELL



CASTAÑO



SILVER PINK



ROSA CHICLE



PINK BARBIE



RASBERRY SORBET



VALIANT POPPY



RUSSET ORANGE



PICANTE



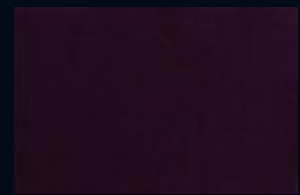
ROJO SANGRE



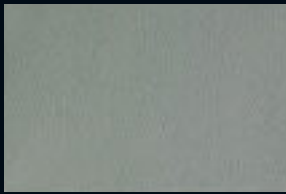
BURDEOS



ROOSTER



POTENT PURPLE



CELESTIAL BLUE



BLUE BELL



STORM BLUE



MOOD INDIGO



ULTRAMAR



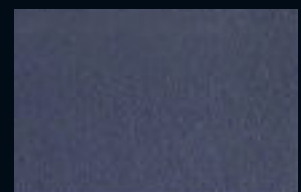
BLUE QUARTZ



VIOLET TULIP



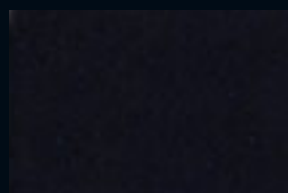
NAVY BLUE



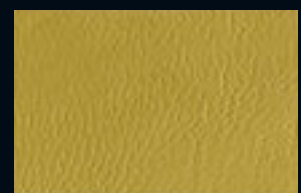
NIGHTSHADOW BLUE



BLACK IRIS



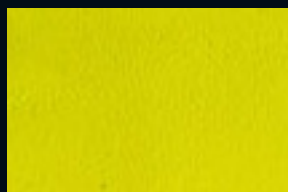
DEEP BLUE



BISCOTTI



VIBRANT YELLOW



ILLUMINATING



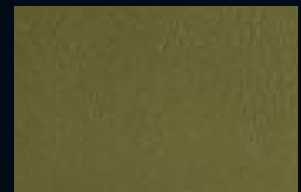
LIME GREEN



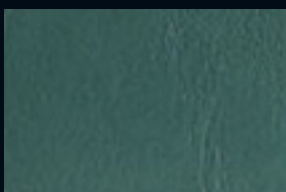
PISTACHO



ISLAND GREEN



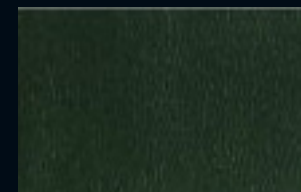
GREY GREEN



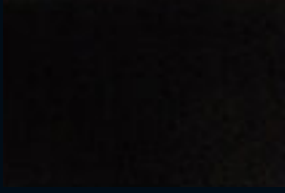
SAGEBRUSH GREEN



ATLANTIC DEEP



MOUNTAIN VIEW



BLACK



CELESTE



AQUAMARINE



OCRE



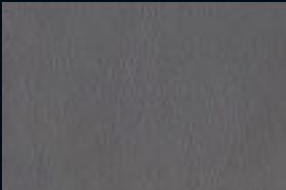
ARENA



TOPO



FLINT GREY



ULTIMATE GREY