
LOLO

Cuir de vachette grainé

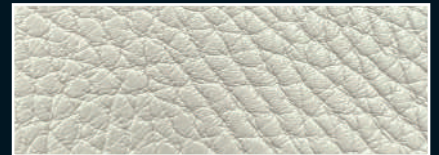
Épaisseur : 1.7/1.9 mm



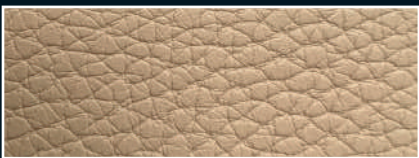
BIANCO



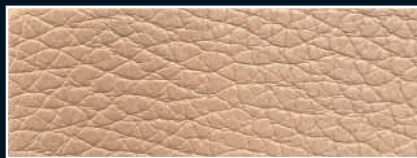
PANNA



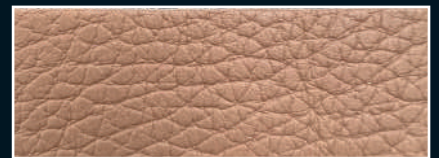
ACQUABIANCO



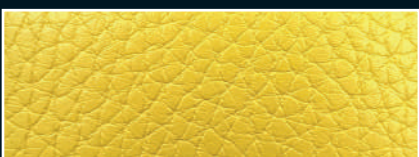
HAVANA



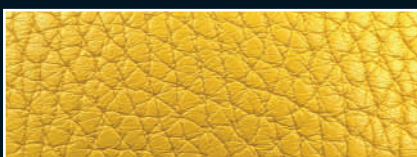
SASSO



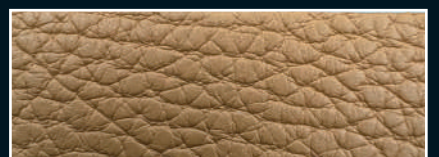
SABBIA



CANARIO



GIALLO



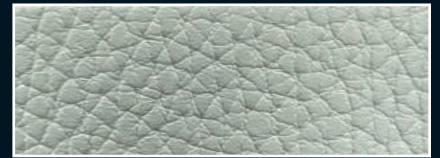
TRONCO



MARLBORO



VINO



CIELO



ACQUA



SMERALDO



AZZURRO



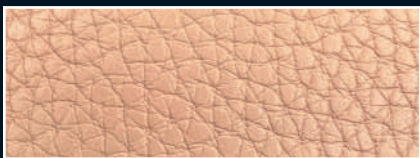
VERDE



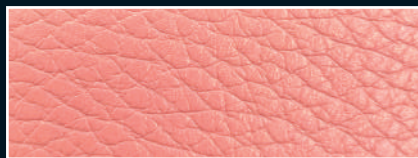
BOTTLE



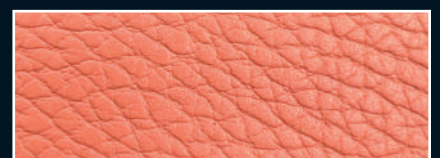
CIPRIA



CHAMPAGNE



ROSA



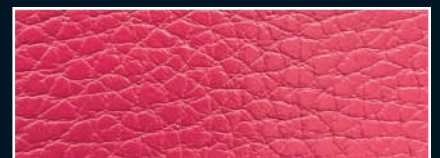
SALMONE



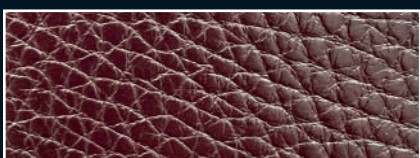
DONNA



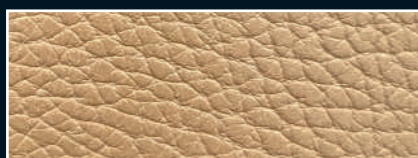
ORANGE



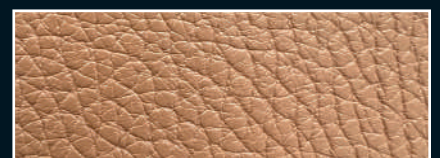
PINK



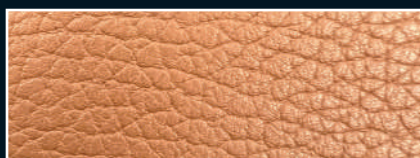
BORDEAUX



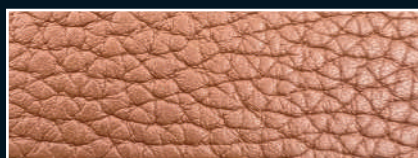
SPIAGGIA



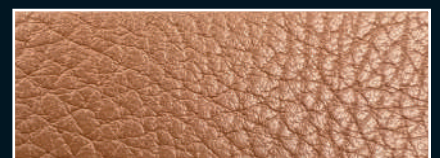
WHISKY



CUOIO



CASTANO



MARRONE



CORTECCIA



TDM



SCURO



SMOG



NUVOLOSO



PEANUT



SIENA



TAN



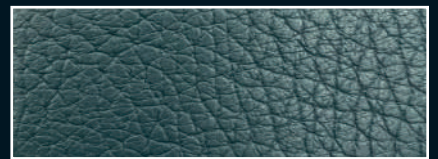
POLVERE



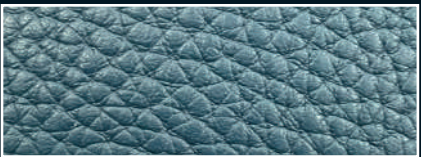
GRIGIO



FUCILE



ATOMO



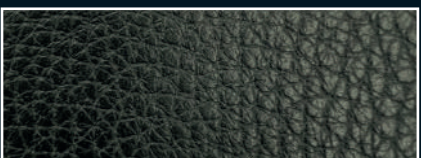
MARE



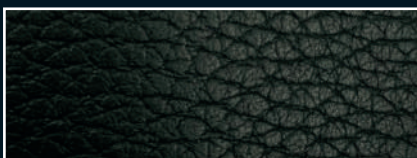
ENERGIA



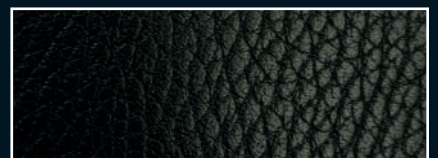
NOTTE



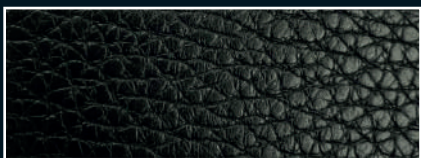
OCEANO



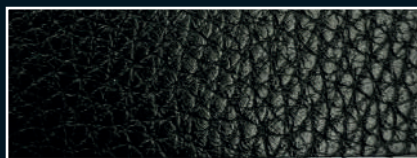
AUDI



MARINE



MARINE SCURO



NOIR